



# User's Guide

Table of Contents

User Interface Overview ..... 2

How to start the Smarty Uninstaller ..... 3

The Ribbon Bar ..... 4

    Actions Tab ..... 4

    Tools Tab..... 7

    Settings Tab ..... 9

    Help Tab..... 11

    Trial Tab ..... 12

The Tab Strip..... 13

The Search Bar ..... 13

The Installed Applications List ..... 14

The Bottom Bar..... 15

Things you might be looking for ..... 16

    The recommended way to Uninstall ..... 16

    The Force Uninstall ..... 17

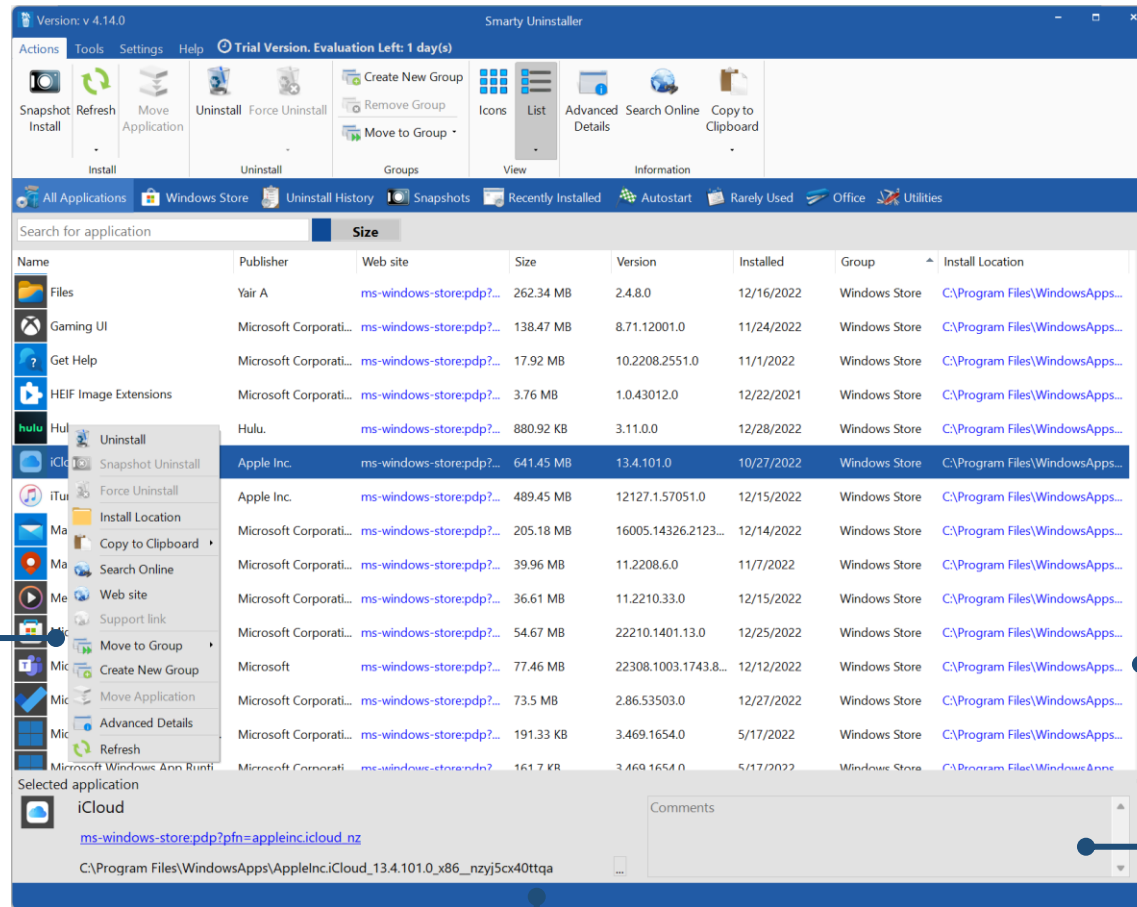
    The Snapshot Install. How to install a new application with Snapshot ..... 18

    How to uninstall the application installed with Snapshot..... 19

    How to install a license file ..... 20

## User Interface Overview

The main components of the Smarty Uninstaller user interface are listed on this page.



**Ribbon Bar**  
The ribbon bar is located across the top of the program window and contains groups of commands

**Tab Strip**  
The tab strip is the strip of tabs under the ribbon bar that allows quick access to the groups of applications and autostart programs

**Search Bar**  
The search bar allows you to quickly search for an application in the installed applications list

**Installed applications list**  
The installed applications list contains all applications detected by Smarty Uninstaller

**Comments Box**  
Allows to add comments to the selected application

**Context Menu**  
The context menu gives fast access to the main functions

**Bottom Bar**  
The bottom bar displays information about the currently selected application

## How to start the Smarty Uninstaller

There are several ways to start the Smarty Uninstaller. This depends on your Windows® version.

To start Smarty Uninstaller from a Windows® desktop, locate the Smarty Uninstaller icon and double-click on it. You can launch Smarty Uninstaller from the Start Menu if your operating system is Windows® 7 or an older version. To do this, click on the Start button on the bottom-left of your desktop, then click on "All Programs," and open the Smarty Uninstaller folder. Then click on the Smarty Uninstaller icon to launch the application.

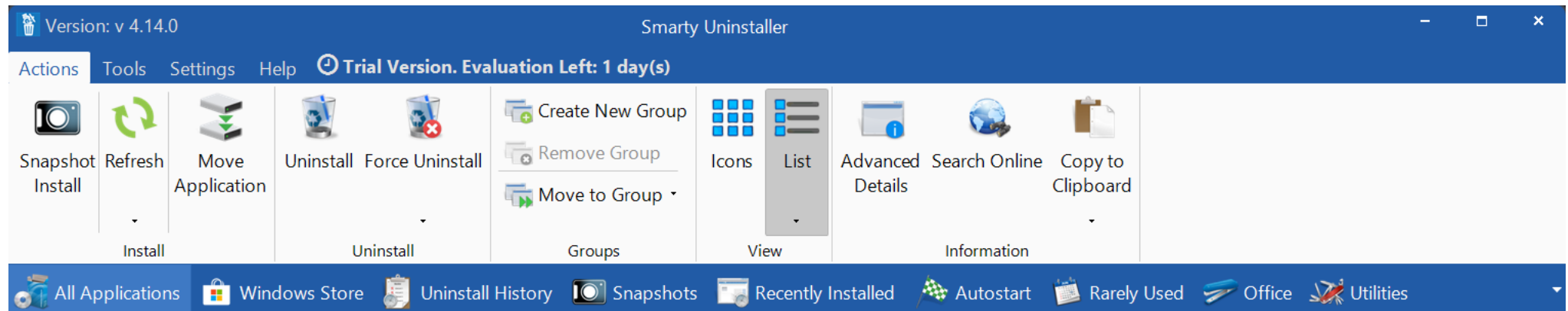
If you are on Windows® 8, you can start the Smarty Uninstaller via the Modern UI. Click on the Smarty Uninstaller tile to start it.

## The Ribbon Bar

The ribbon bar contains a series of tabs that have commands. Each tab contains groups of related commands. In Smarty Uninstaller, the main command tabs are Actions, Tools, Settings, and Help. The trial version has an additional Trial tab. The commands on this tab are divided into five categories: Install, Uninstall, Groups, View, and Information.

### Actions Tab

Most of the frequently used commands are located in the Actions tab. The commands on this tab are divided into five categories: Install, Uninstall, Groups, View, and Information.



#### Snapshot Install

The Snapshot Install command allows you to monitor application setup and detect changes to your system, such as Windows registry changes and files on your hard drive(s). These changes are saved to the snapshot file. It helps you to completely uninstall the installed application after using the built-in Uninstaller, which sometimes can leave leftovers in your system. Also, it will enable you to review the detected changes at any time.

#### Refresh

If the Smarty Uninstaller was open when you installed new applications, use this command to refresh the list of installed applications.

#### Move Application

This command allows you to move the application or game to another drive without reinstalling. A Junction Point (like a shortcut) will be created in the original directory, do not modify or delete it. Click this button again to move an application to the original location.

## Uninstall

The recommended way to uninstall applications. This command starts a built-in Uninstaller to uninstall an application in the usual way, and then it uses an intelligent scan engine to check the system for leftovers.

### Force Uninstall

This command allows you to uninstall the selected application without using the built-in Uninstaller. It uses an intelligent scan engine to detect the registry and file changes made by the chosen application. When changes are detected, you can delete them from the system. In addition, you can use this command to review the detected changes without performing the removal process.

### Force Uninstall

This command is enabled only if the selected application was installed with the help of the Install Snapshot command. It allows uninstalling applications by using a previously created install snapshot. In addition, you can use it to view the detected file and registry entries and create a detailed HTML report.

## Change

For some applications, you will see a Change button available. You can change an application's configuration by adding or removing specific options.

## Repair

This can help to repair corrupted applications. It tells the application to inspect itself and replace damaged files with new ones. You may need to have the application's original DVD or installation package. This command is available only for applications that support it.

## Incomplete Uninstall

Sometimes, the uninstall process may be interrupted in the middle or require you to restart the PC. This command allows you to resume and complete this uninstall process by starting the intelligent scan engine to detect and delete leftovers. The Incomplete Uninstalls button is visible only if an incomplete uninstall exists.

## Create a new group

Smarty Uninstaller includes predefined groups and allows one to add more groups easily. Groups allow for group applications based on their functionality to simplify the list of installed applications. Grouped applications will be conveniently displayed under separate tabs for even easier access.

This command is used to add the new group. All selected applications will be moved to the newly created group automatically.

## Remove group

Use this command to remove the group from the Smarty Uninstaller. All applications from the removed group will be moved to the default group.

## Move to group

This command allows moving selected applications to the appropriate group.

### **View – Icons**

View commands allow you to choose how applications are displayed in the list of installed applications.

In **Icons** mode, each application appears as a full-sized icon with the application name and information to the right of it.

### **View – List**

In **List** mode, each application appears on a separate line with further information arranged in columns. Columns can be reordered. Every column can be freely resized.

### **Advanced Details**

This command will display a window with advanced information about the selected application. In addition, it allows viewing and editing registry entries in the application uninstall key.

### **Search Online**

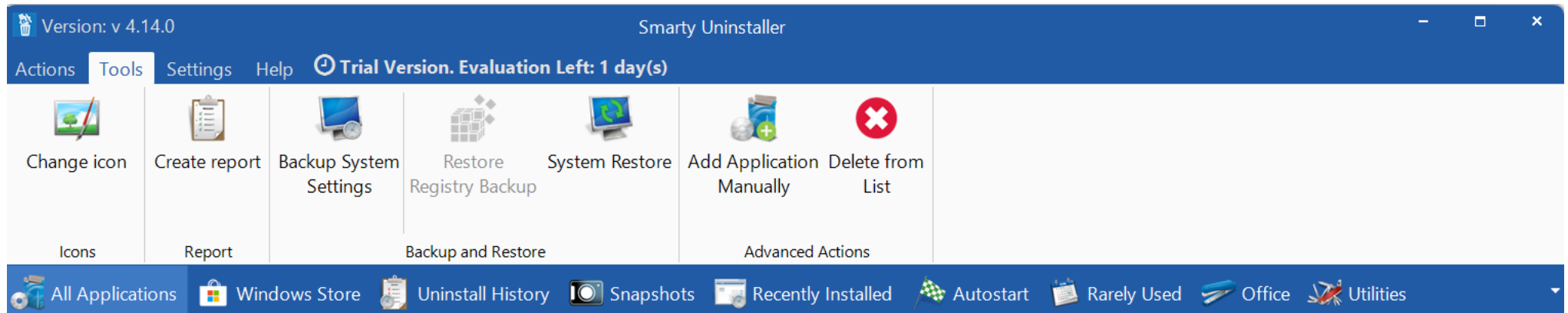
This command uses your browser's search engine to look for information about the selected application on the web.

### **Copy to Clipboard**

This command allows you to copy information about selected applications to the clipboard.

## Tools Tab

The Tools tab contains several tools that will help to create reports, backup and restore the registry, create system restore points, manually add new entries to the installed applications list, and other valuable features.



### Change icon

This command allows you to set your icon for any application in the list.

### Create Report

This command creates a detailed report about installed applications. The information will be saved as an HTML file.

### Backup System Settings

We highly recommend that you make backups of the system to restore the system state in case of any problems. Use this command to create a system restore point or registry backup.

### Restore Registry Backup

This command allows to restore of the last registry backup.

### System Restore

Use this command to start the System Restore tool to restore the system to an earlier date.



**Add application manually**

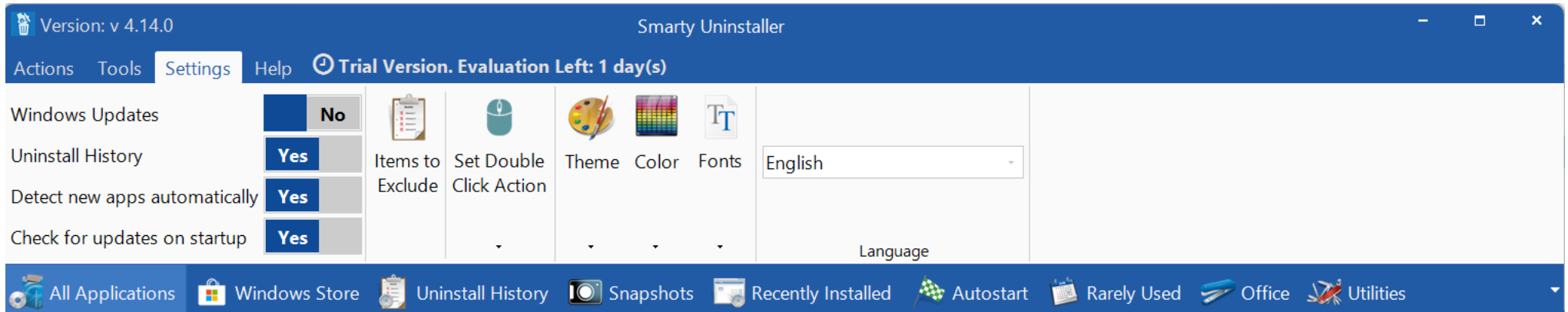
This feature is helpful if you have an application on your hard drive, but it needs to be listed in the installed applications list for some reason. For example, when an application was installed without the use of an installer, downloaded, and unzipped to the hard drive. Use this command to manually add an application to the uninstall list by pointing Smarty Uninstaller to the application's executable file (.exe).

**Delete from the list**

This command lets you delete the application entry from the list of installed applications. Use this feature carefully. This will not remove the application from your system. It will simply prevent it from showing in the I. This installed applications. It is helpful if the application was mistakenly added manually by the Add Application command.

## Settings Tab

The Settings tab allows you to customize the look of Smarty Uninstaller, set user interface language, and hide or show system applications in the installed applications list.



### Windows Updates and System (hidden) components

Use these switches to show or hide Windows® updates and hidden components from the installed applications list.

### Uninstall History

If enabled, Smarty Uninstaller will track the uninstalled applications

### Items to Exclude

Use this command to define and manage items not scanned by the intelligent scan engine. You can add folders or registry entries to the list of exclusions or remove them from the list.

### Set Double Click Action

This command sets what happens when you double-click an application icon in the installed applications list. It can be set to start to uninstall the process or to show advanced details.

### Menu Style and Color

These commands allow you to change the look of the user interface to one of the predefined themes.

### Fonts

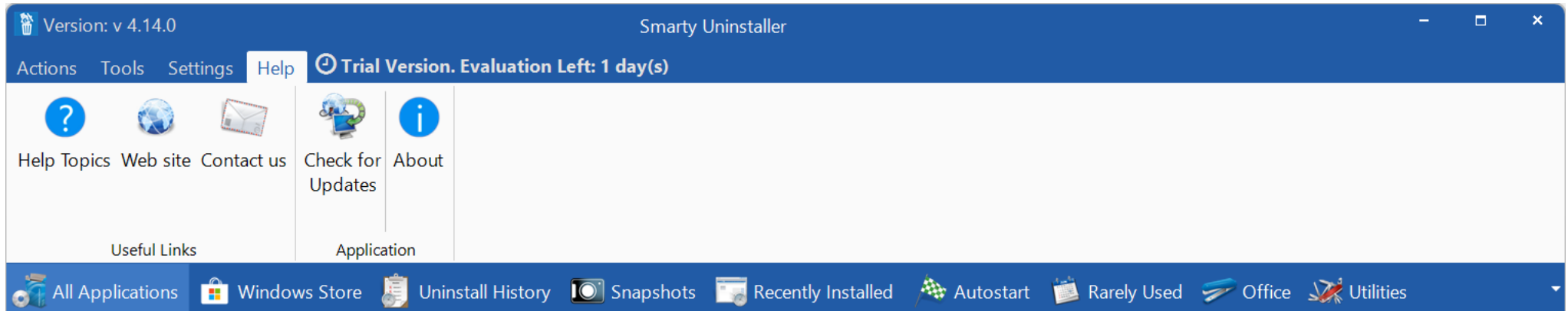
Use this option to change the fonts of the ribbon menu and the installed applications list.

## Language

Smarty Uninstaller allows you to change the interface language on the fly without restarting the program.

## Help Tab

The Help tab gives access to helpful information regarding Smarty Uninstaller and its use.



### Help Topics

This command allows browsing online help topics for Smarty Uninstaller.

### Web site

Click this button to open Smarty Uninstaller's web page.

### Contact us

Use this command to open a web page with a contact form.

### Check for Updates

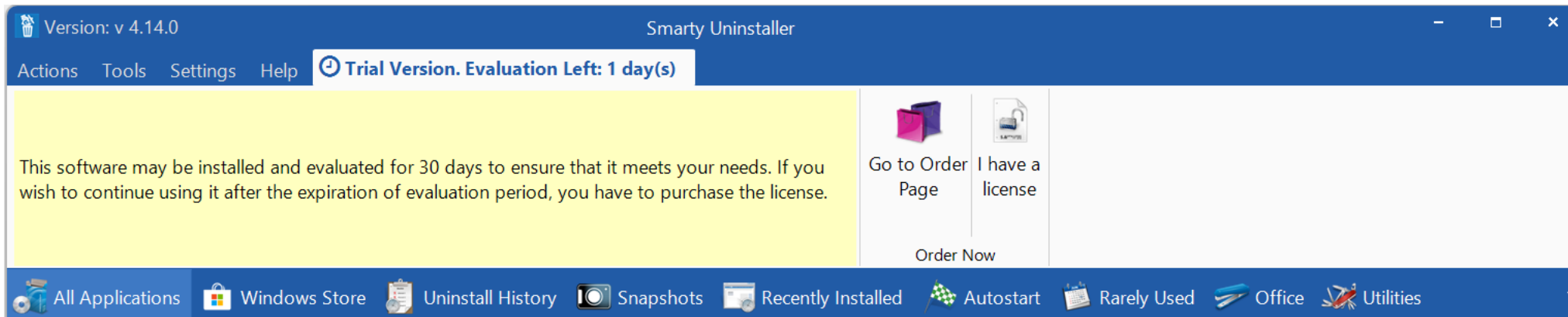
Click the Check for Updates button to initiate a check for available updates.

### About

The About dialog displays the version, licensing, and copyright information for Smarty Uninstaller.

## Trial Tab

The Trial bar is visible only when you use the Smarty Uninstaller's trial version. It displays the number of days remaining in the trial period. Additionally, it allows you to visit the purchase page and install the purchased license.



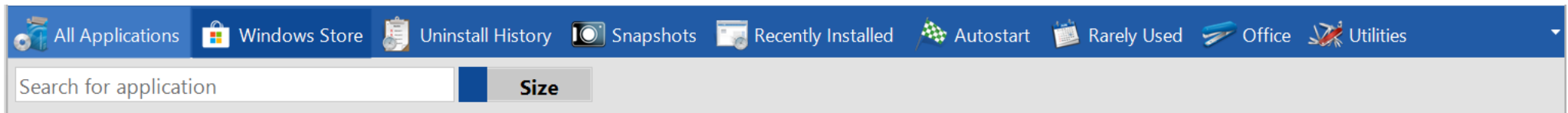
### Go to Order Page

Click this button to visit the purchase page.

### I have a License

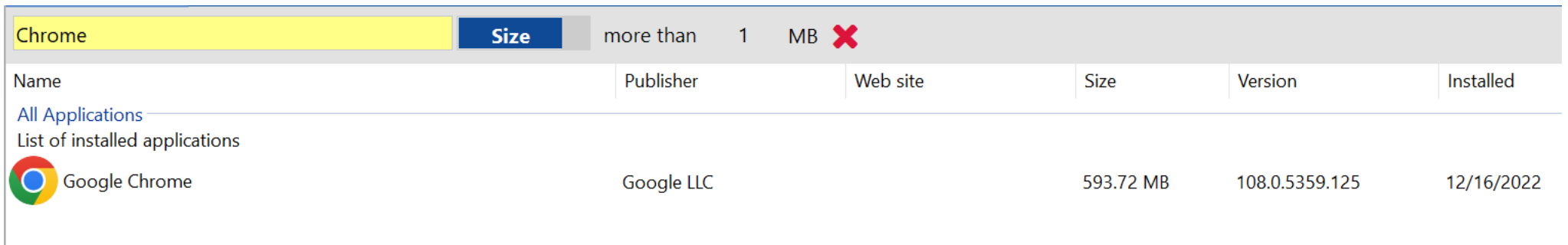
This button allows installing purchased license file. See How to install a license file for more details.

## The Tab Strip



The Tab Strip is located under the Ribbon Bar and lets you quickly switch between available groups of applications and access the Windows® startup list. You can use the small arrow on the right side to switch between groups via an additional menu if you have many groups. It also allows accessing the uninstall history.

## The Search Bar



The search bar lets you quickly search for an application in the installed applications list. Simply typing text into the search bar will reduce the visible list of applications to those which contain that text in the name.

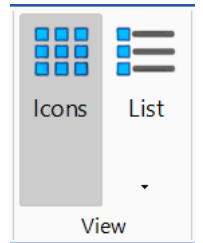
Searching is incremental. As you type each character into the text field, the search is narrowed further. This is useful for finding an application where you only remember part of a name, for example.

The Size switch allows filtering out applications that are above or below a specific size. When the Size switch is enabled, two additional controls are displayed. The first one allows switching between two states: “more than” and “less than” If “more than” is active, only applications of a specified size or greater will be displayed, and “less than” gives an opposite result. The second control is the text field where you enter the application’s size.

Use the small red button with a cross symbol to cancel the search.



## The Installed Applications List

All installed applications are shown in the installed applications list. This list allows viewing the installed applications and organizing and sorting them differently. The installed applications list can display applications in two views: Icons or List. The View can be selected using the Icons and List buttons from the Actions tab on the Ribbon Bar.





### The Icon View

In Icon View, each application is displayed as a single icon with an icon label that shows the size and version.

Name	Publisher	Web site	Size	Version	Installed
 All Applications List of installed applications					
 Winamp 42.44 MB 5.9					

### The List View

Each application is displayed as a single line on the installed applications list in List View. Each row shows the following information: Name, Publisher, Web Link, Size, Version, Installed and Accessed dates, Group, and Install location.

Name	Publisher	Web site	Size	Version	Installed
 All Applications List of installed applications					
 Winamp	Winamp SA	<a href="http://www.winamp.com/">http://www.winamp.com/</a>	42.44 MB	5.9	8/4/2022

Clicking on the column headers allows you to sort and group the applications in the installed applications list by the selected column, either by Name, Publisher, Size, etc. By default, the list is sorted by Group. The currently sorted column is highlighted in color.

The columns can be reordered by dragging them to new locations in the list. The columns can be resized by dragging the column separator bars to the left or right. Double-click the column separator bars to size the column to the content width automatically.

## The Bottom Bar

The bottom bar shows the information about the selected application(s). You can hide this bar by clicking the arrow button in the upper right corner. Also, it allows you to enter your notes for the selected application. Just type the text, and it will be saved automatically.





## Things you might be looking for

### The recommended way to Uninstall

We recommend uninstalling applications by using the Uninstall command. It combines the built-in application Uninstaller and Smarty Uninstaller's smart scan engine.

To uninstall the application by using the Uninstall command, perform the following steps:

1. Ensure that the application you want to uninstall is not running currently
2. Open the Smarty Uninstaller and select the application you want to uninstall
3. Click the Uninstall button on the ribbon menu
4. The built-in application Uninstaller will be started. Follow the onscreen instructions to complete the uninstall process with the built-in Uninstaller
5. Smarty Uninstall will start the intelligent scan engine to check the system for leftovers right after the built-in Uninstaller
6. *Note: Sometimes, Smarty Uninstaller cannot monitor the built-in Uninstaller. In this case, you must manually press the Continue button when the regular uninstall process has been completed.*
7. Once the scan is completed, click Uninstall button on the top menu
8. The confirmation screen will appear, allowing you to set the following settings:
9. **Restore Point:** When enabled, a system restore point will be created before the cleanup
10. **Secure Delete:** If set, all application files will be shredded to ensure that nobody will ever be able to recover these files from the hard drive
11. **Delete to Recycle Bin:** With this setting enabled, all deleted files will be moved to the Recycle Bin
12. Click Yes to confirm uninstall and wait until cleanup is completed. A message informing about the result of the operation and the possible errors encountered will be displayed
13. Click the button with a green checkmark to close the window with cleanup results and return to the list of installed applications

## The Force Uninstall

The Force Uninstall command starts the intelligent scan engine before running a built-in uninstaller, which allows the following:

- Uninstall an application without using the built-in application Uninstaller when it does not function
- Detect what file and registry entries are installed with the selected application
- Create a detailed report of detected file and registry entries in HTML format
- Save scan results as Snapshot File to remove or review these entries in the future quickly.

To remove the application by using the Force Uninstall command, perform the following steps:

1. Ensure that the application you want to uninstall is not running currently
2. Open the Smarty Uninstaller and select the application you want to force uninstall
3. Click the Force Uninstall button on the ribbon menu. Smarty Uninstall will start the intelligent scan engine to check the system for leftovers
4. Once the scan is completed, click the Force Uninstall button on the top bar to finish the forced uninstall. See steps 6-9 from [The Recommended Way to Uninstall](#) topic for details.

To create a detailed report of detected entries:

1. Perform steps 1-3 from above
2. Once the scan is completed, click the Report button on the top menu bar
3. The Save dialog will appear on the screen. Select where you want to save a report and click the Save button. The newly created report will be displayed in the default web browser.

To save detected entries as a snapshot file:

1. Perform steps 1-3 from above
2. Once the scan is completed, review the results and click the Save Snapshot button on the top menu bar
3. You can now click the Close button to close the intelligent scan window and use the Force Uninstall command to view or remove detected leftovers for this application.

## The Snapshot Install. How to install a new application with Snapshot

The Snapshot Install command allows you to monitor application setup and detect changes to your system, such as Windows registry changes and files on your hard drive(s). These changes are saved to the snapshot file. It helps clean up the installed application's leftovers after using the built-in Uninstaller.

Follow the steps below to install the new application with the snapshot:

1. Open the Smarty Uninstaller and click the Snapshot Install button on the ribbon menu
2. Follow the instructions provided and click the OK button to create the pre-install system snapshot
3. You can now install the application you want to monitor, in the usual way, by following the instructions provided by the setup program
4. Once the installation process has finished, go back to the Smarty Uninstaller and click the OK button to create the post-install snapshot
5. Once the post-install snapshot has been created, the window with the name of the detected application will be displayed
6. Click OK to confirm. The newly installed application will be added to the list of installed applications
7. Click the Snapshots tab and select the monitored application
8. Click the Force Uninstall button on the ribbon menu to view the detected application components. Click the Close button when done.

## How to uninstall the application installed with Snapshot

This command is enabled only if the selected application was installed with the help of the Install Snapshot command. It allows uninstalling an application by using a previously created snapshot. Also, it can be used to view the detected file and registry entries and create a detailed HTML report.

Follow the steps below to uninstall an application installed with the Snapshot Install command:

1. Open the Smarty Uninstaller and click the Snapshots tab under the ribbon menu
2. Find the application you want to uninstall and click the Uninstall or Force Uninstall button on the ribbon bar
3. An instant later, a window with snapshot entries will open. Please wait while the snapshot entries are being loaded
4. Click the Force Uninstall button on the top menu bar
5. Follow the onscreen instructions to complete the uninstall process.

## How to install a license file

Shortly after purchasing a license, you will receive a confirmation email with a license file attached. The license comes in a SmartyUninstaller.smlicense file. Save it to any location on your hard drive and proceed with the following steps:

1. Locate your previously saved license file and double-click to open it
2. This will start the Smarty Uninstaller and display the About window. If everything is fine, you should see your name under the version of Smarty Uninstaller.

The alternate way to install the license file is to open Smarty Uninstaller and perform the following steps:

1. Click the Trial tab on the ribbon menu
2. Click the "I have a License" button
3. Locate and select your license file and click the Open button. The About window will open. You should see your name under the version of Smarty Uninstaller.